

Newsletter



NWL GP Federation
Working together for our patients

January 2025

This year we teamed up with LLR Mind to offer a community well-being service to our mental health pathway. This adds a further option for patients seeking one to one support around their health and well-being.

Happy
New Year!

We are proud to announce that North West Leicestershire GP Federation won the Charity & Business Partnership of the year award with LLR MIND at the VAL awards 2024!



Do you struggle to hear clearly?

Why not try a friendly Lip-reading & hearing support group led by a fully qualified lip-reading tutor



Tuesdays from 1pm to 3pm
Marlene Reid Centre, 58 Belvoir Road, Coalville

To find out more, please contact
07999 060 944



**Charity & Business Partnership of the Year
2024 WINNER**

How we are helping your GP practice to free up valuable appointments?

FCP Physiotherapy



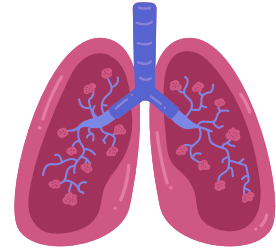
Face to face & remote consultations for patients aged 16+ with soft tissue injuries, sprains, arthritis, muscle problems including lower back pain and nerve symptoms.

Winter Access



Face to face appointments 6.30pm - 8pm
Monday to Friday (clinics based at Long Lane
Surgery and Castle Medical Group)
Suitable for children and adults with any
symptom (Until March 2025 only)

Acute Respiratory Infection Clinics



Face to face appointments
4pm-6.30pm Monday to
Friday (clinics based at
Long Lane Surgery and
Castle Medical Group)
Suitable for children 3
months + with new onset
of respiratory symptoms
i.e. cough, possible chest
infection.

We're making healthcare even more accessible! Feel free to **pre-book** a phone consultation between 6:30pm-8pm, Monday to Friday. Choose from a GP, Advanced Nurse Practitioner, or Clinical Pharmacist and get the help you need.

But wait, there's more! Every Saturday, from 9am-5pm (alternating between Long Lane Surgery (Coalville) and Castle Medical Group (Ashby De La Zouch) we're offering in-person **pre-booked** appointments for routine consultations. Whether its a minor illness, a menopause consultation, medication review, or cervical smears , we've got you covered.

We know life can get in the way of taking care of yourself, so these options are here for those who need a little flexibility.

To book into one of these appointments, please contact your GP practice.

North West Leicestershire GP Federation's Nursing Associates

What is a nursing associate?

They help to bridge the gap between a healthcare assistant and a registered nurse. They can help you with long term condition reviews, smear taking with additional training, blood tests, BP monitoring and dressings.

4 of our nursing associates have started their 2nd year, and are due to qualify September 2025, with 1 nursing associate is due to start their nurse training Jan 2025.

We are also recruiting for a registered nursing associate in one of our local practices, check out our vacancies section for more information.

Here at North West Leicestershire GP Federation we have 6 student nursing associates, of which 2 are a registered nursing associates. They all attended the LLR Nursing Associate Conference back in October as seen here!



(Left to right) Ella, Hannah, Grace & Sophie

Psst! Want to know all the hip and happening events in the local area? Then join our social media squad! Keep tabs on our Facebook page at [North West Leicestershire GP Federation](#) and our X page (formerly known as Twitter) at [@nwlged](#).

